

Astor (brand), Radio Corporation Pty., Ltd.;  
Melbourne

Year 1949

Valves / Tubes. [6A8G](#) [6B8G](#) [6V6GT](#) [5Y3GT](#)

Superheterodyne (common); ZF/IF 455 kHz;

2 AF stage(s); Reflex

[6 AM](#) circuit(s)

Broadcast only (MW).

Alternating Current supply (AC) 200-250 Volt

Permanent Magnet Loudspeaker Ø 6 inch



Fig 1. Original very early model Astor GJ built 1949 Serial No. 281.

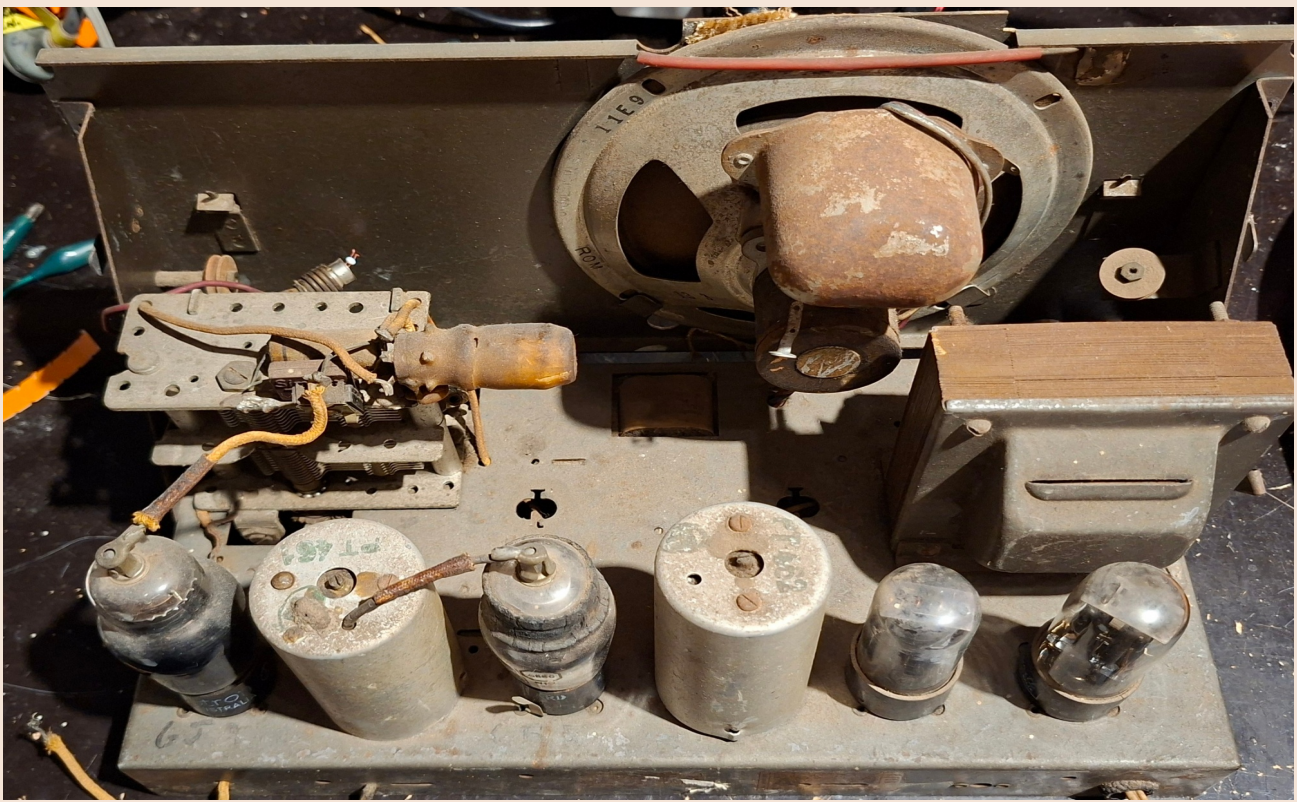


Fig 2. Chassis as found

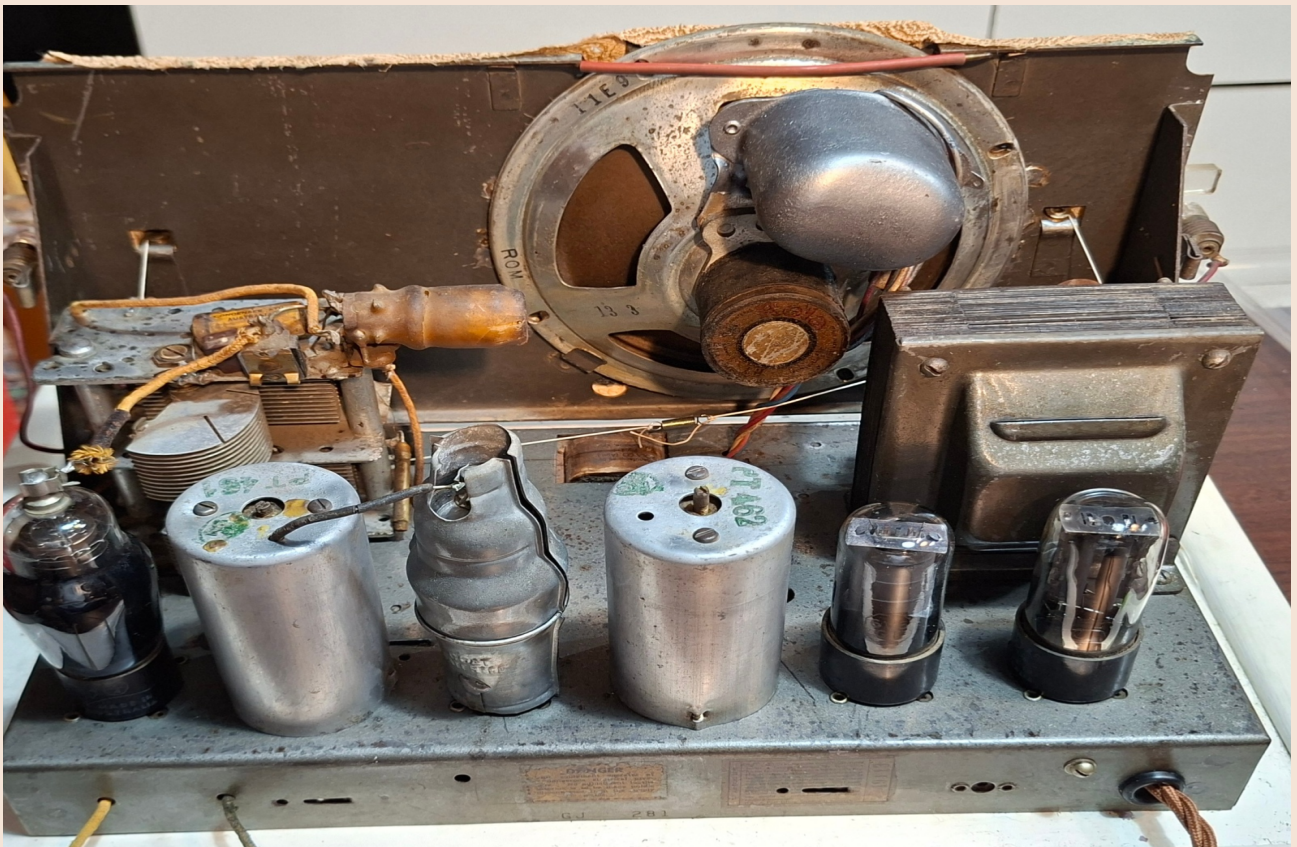


Fig 3. After Chassis Restoration

Fig 4. Parts and factory layout before any repair work.

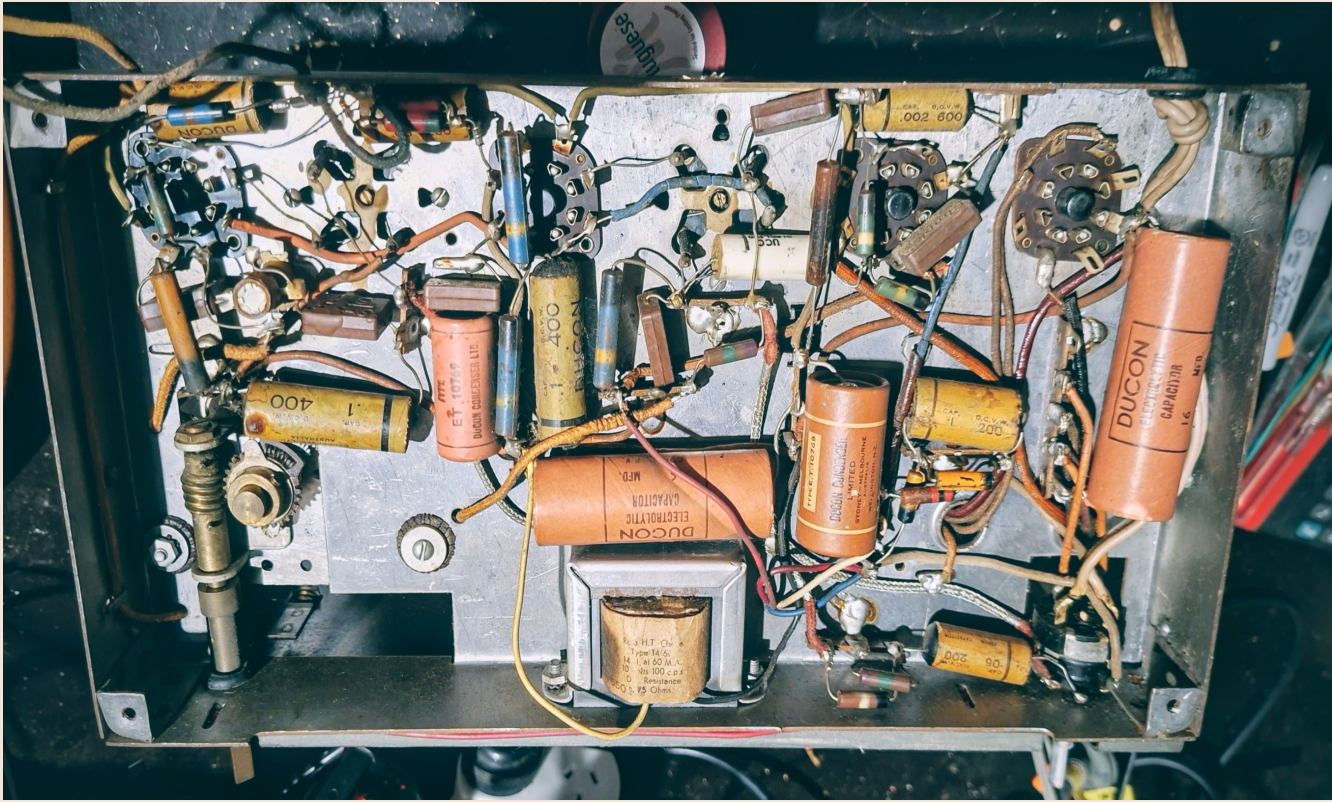


Fig 5. After full service and replacement parts into original housing and layout.

## Restoration Summary:

Radio passed all safety checks and was slowly powered up without and with Valves. Voltage checks, found 5Y3 valve with very low emissions causing B+ incorrect voltage. No reception but Audio was working. Most Capacitors were replaced starting with 16uF electrolytics which were stuffed into original housings and a number of resistors were replaced with period resistors within the desired spec. Alignment was completed following factory procedure. Radio was now working well, though original power switch on volume control was not consistently working.

A new dial string was painstakingly installed. Knobs were found from another donor GJ Radio, was the Grill loth.

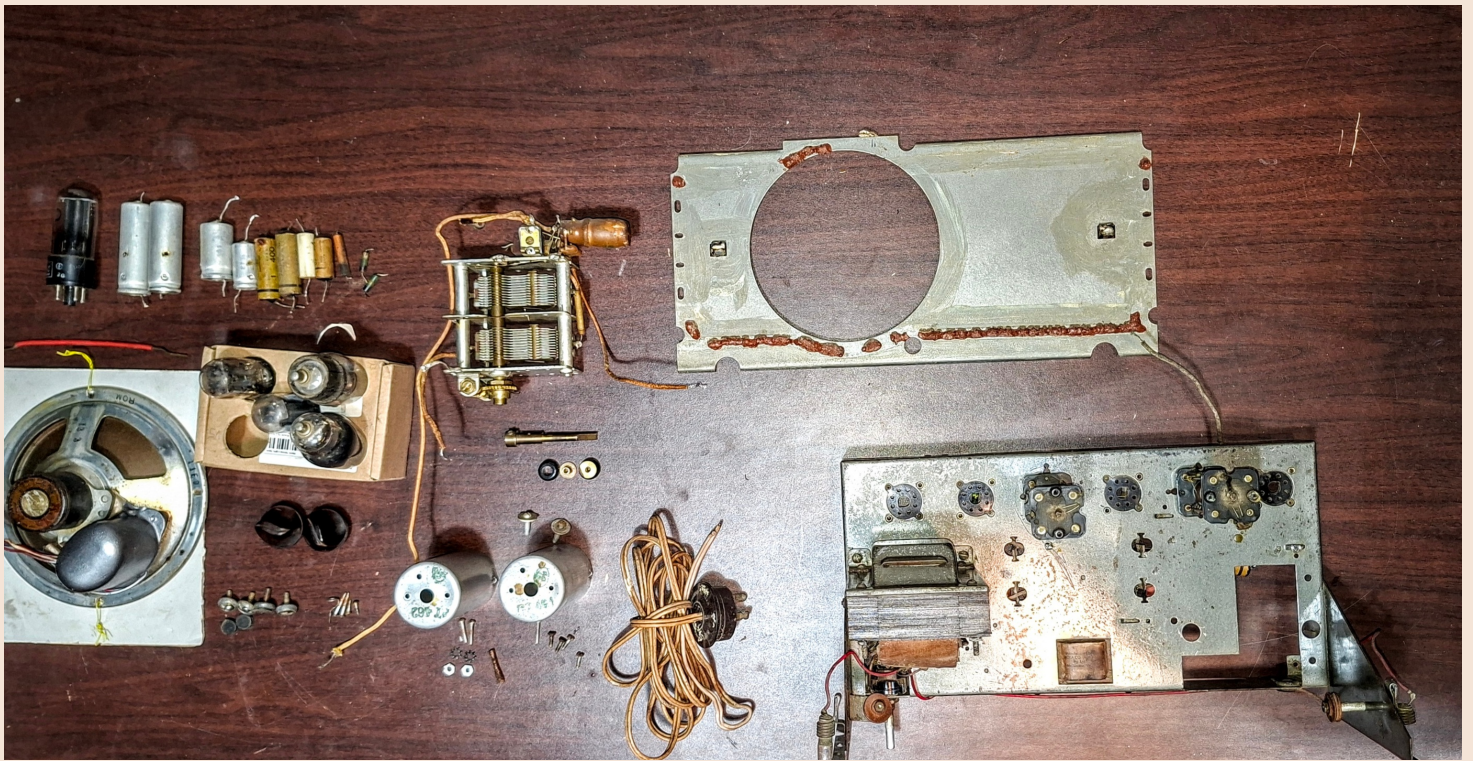


Fig 6 Break down of key components allowing for cleaning.



Fig 7 Parts after 77 years that had failed.

Cabinet had all paints spots were removed and was cleaned and polished with Brasso then a bees wax protective polish was applied.



Fig 8 Completed Radio ready for display and operation.



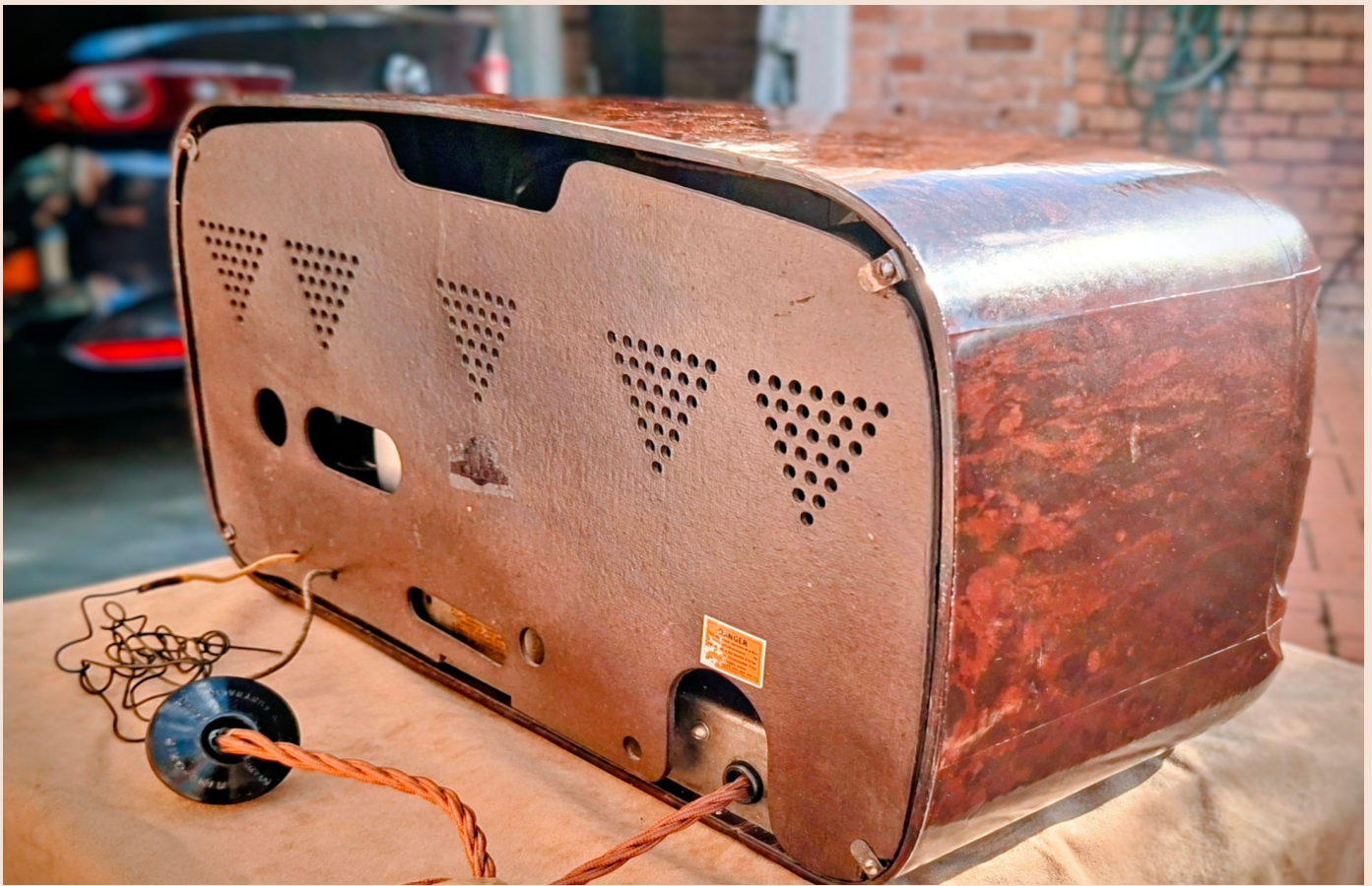


Fig 9 Original Back Panel.









